

SHIELDED SMD POWER INDUCTORS / SCI TYPE

FEATURES

- ◆ Low DC resistance
- ◆ Suitable for large currents
- ◆ Available in magnetically shielded
- ◆ Small size with the electrode attached to it

APPLICATIONS

- ◆ Power supply for VTRs.
- ◆ Portable communication equipment.
- ◆ LCD televisions.
- ◆ DC to DC converters, etc.

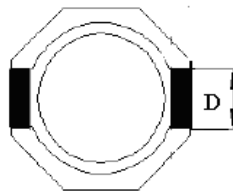
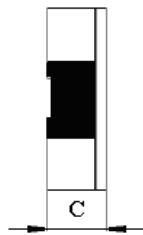
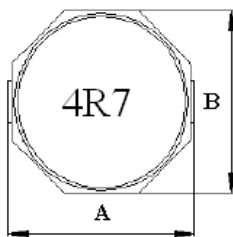


ORDERING CODE

SCI 8D28 - 4R7 □



DIMENSIONS (UNIT: mm)



A	9.5 (MAX)	m/m
B	8.4 (MAX)	m/m
C	3.2 (MAX)	m/m
D	2.5 (REF)	m/m

CORE MASTER ENTERPRISE CO., LTD.

<http://www.coremaster.com.tw>



SHIELDED SMD POWER INDUCTORS / SCI TYPE

ELECTRICAL CHARACTERISTICS FOR SCI8D28

Part No.	Inductance (uH)	RDC (Ω)	IDC (A)
SCI8D28-1R0 □	1.0	0.021	5.50
SCI8D28-4R7 □	4.7	0.040	3.90
SCI8D28-5R6 □	5.6	0.045	3.50
SCI8D28-6R8 □	6.8	0.050	3.40
SCI8D28-100 □	10	0.070	3.00
SCI8D28-220 □	22	0.099	1.10
SCI8D28-101 □	100	0.500	0.65

* 100uH 以上 Test Frequency : 1KHZ/1V

* 100uH 以下 Test Frequency : 100KHZ/0.1V